

Welded Bellows/Formed Bellows

Inquiry form



In order to make an offer that matches your requirements, please answer the following questions and send us the page per email or fax.

1. Bellows OUTER

OD - Diameter max: mm
Pressure: HV UHV atmosphere other:
Medium: gas /atmosphere / vacuum fluid

2. Bellows INNER

ID - Diameter min: mm
Pressure: HV UHV atmosphere other:
Medium: gas / atmosphere / vacuum fluid

3. Movement

Stroke axial: mm
lateral: mm
angular: mm

Shall the movements be combined? (e.g. axial and lateral at the same time) yes no

How many times does the movement occur? (e.g. 10,000=1.0E4 x back and forth in the whole lifetime):
1.0E3 1.0E4 1.0E5 1.0E6 other:

4. Temperatures

Outgassing temperature: °f **Service temperature:** °C

5. Material

For welded bellows: AM350 1.4404=316L other:
For formed bellows: 1.4541=AISI32 1.4404=316L other:

6. End fittings Overview of the standard dimensions on the next page

On the one side:

On the other side:

tube or ring: Di= mm
Da= mm
Length= mm

tube or ring: Di= mm
Da= mm
Length= mm

CF-flange: DN= mm
Length= mm

CF-flange: DN= mm
Length= mm

KF-flange: DN= mm
Length= mm

KF-flange: DN= mm
Length= mm

ISO-K-flange: DN= mm
Length= mm

ISO-K-flange: DN= mm
Length= mm

according to drawing No:

Material of the fittings: stainless steel for vacuum (standard) other:

7. Mounting position of the bellows vertical horizontal inclined

8. Quantity units

Company/organisation:	Phone:
Contact person:	Fax:
Address:	Email:
	Website:

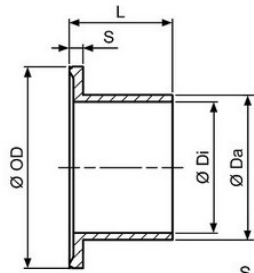
Fittings and flanges

Standard dimensions

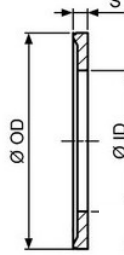


Fittings are also called end part or connecting part. First choose the fitting, the dimensions of the bellows will be adjusted to them.

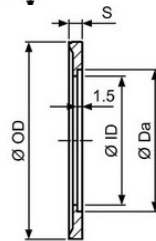
Tube



Ring without centering



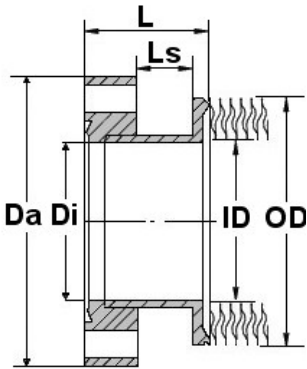
Ring with centering



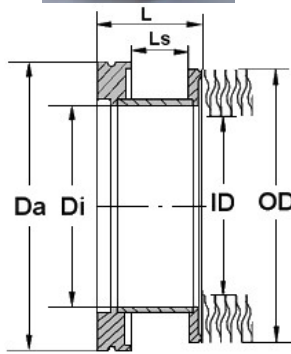
Outer Ø	Inner Ø	Ring width
Da	Di	S
8	6	4
12	10	4
18	16	4
18	16	4
25	21	4
34	31	4
41,3	38	4
41,3	38	4
50	46	4
57	53	4
70	66	5
76,1	72,1	5
95	90	5
108	104	5
139,7	134,5	5
156	150	5
179	175	6
206	200	6
256	250	6
306	300	6

Other dimensions available on request
Subject to modifications

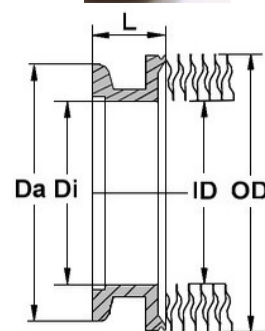
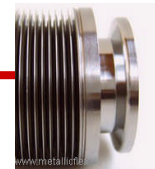
CF-flange



ISO-K-flange



KF-flange



DN	CF				ISO-K				KF		
	Outer Ø	Inner Ø	Length	Inter-space	Outer Ø	Inner Ø	Length	Inter-space	Outer Ø	Inner Ø	Length
	Da	Di	L	Ls	Da	Di	L	Ls	Da	Di	L
DN10									30,0	10,0	14,0
DN16	33,8 (1 1/3")	16,0	20,0	8,4					30,0	16,0	14,0
DN25									40,0	25,0	14,0
DN40	69,4 (2 3/4")	38,0	29,0	12,3					55,0	39,0	15,0
DN50									75,0	50,0	18,5
DN63	113,5 (4 1/2")	66,0	36,0	14,6	95,0	70,0	40,0	24,0			
DN100	151,6 (6")	104,0	41,0	17,1	130,0	102,0	40,0	24,0			
DN160	202,4 (8")	150,0	43,0	16,7	180,0	150,0	44,0	28,0			
DN200	253,2 (10")	200,0	50,5	21,9	240,0	213,0	44,0	28,0			
DN250	306,0 (12")	250,0	51,0	19,7	290,0	260,0	44,0	28,0			

Other dimensions available on request

Subject to modifications

All dimensions are in [mm]